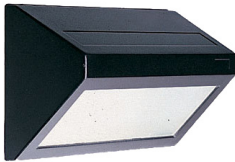


APPLY MINI



APPLY 1



APPLY 2



APPLY 2 BIDIRECTIONAL

APPLY

Wall or pole mounted LED luminaires.

FEATURES:

- 5 year warranty
- 50000 hrs rated life @ L70 B50
- Integrated LED driver
- EN AB-47100 Die-cast aluminium body (low copper content)
- Polyester powder coating with special Anti-corrosion treatment (Complies with EN 600068-2-11 Environmental testing - Salt mist)
- Frosted tempered glass diffuser
- Silicon rubber gaskets
- ApplyMini CRI>80
- Apply1 & Apply2 CRI>85
- IP65

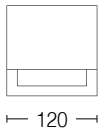
OPTIONS :

- CCT 3000K / 4000K / 6000K
- Black / grey / brown finish
- Pole mount

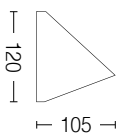
APPLICATIONS:

- Commercial buildings
- Apartments
- Residential areas

APPLYMINI



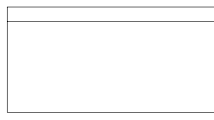
120



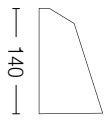
120

105

APPLY1



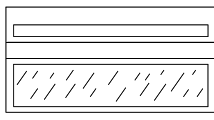
275



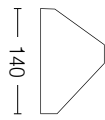
140

85

APPLY2

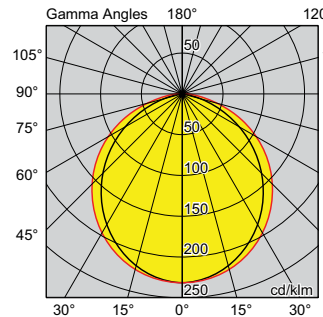


280

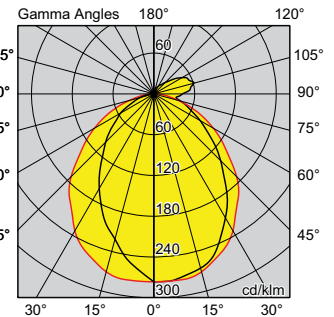


140

85



APPLY1
8W 3000K



APPLY2 BIDIRECTIONAL
12W 3000K

PRODUCT CODE	VERSION	WATTAGE	CCT	CRI	DELIVERED LUMENS*	MASS
E8065-LBC	APPLY MINI 7.2W 3000K BLACK	7.2W	3000K	>80	576lm	0.75kg
E8066-LBC	APPLY MINI 7.2W 3000K GREY	7.2W	3000K	>80	576lm	0.75kg
E8067-LBC	APPLY MINI 7.2W 3000K BROWN	7.2W	3000K	>80	576lm	0.75kg
E8050-LBC	APPLY 1 8W 3000K BLACK	8W	3000K	>85	518lm	1.50kg
E8040-LBC	APPLY 2 8W 3000K BLACK	8W	3000K	>85	569lm	1.80kg
E8046-LBC	APPLY 2 BIDIRECTIONAL 12W 3000K BLACK	12W	3000K	>85	894lm	1.80kg

CCT codes: LBC = 3000K / LBN = 4000K / LBI = 6000K

*Delivered lumens from luminaire, including thermal, electrical and optic losses.